



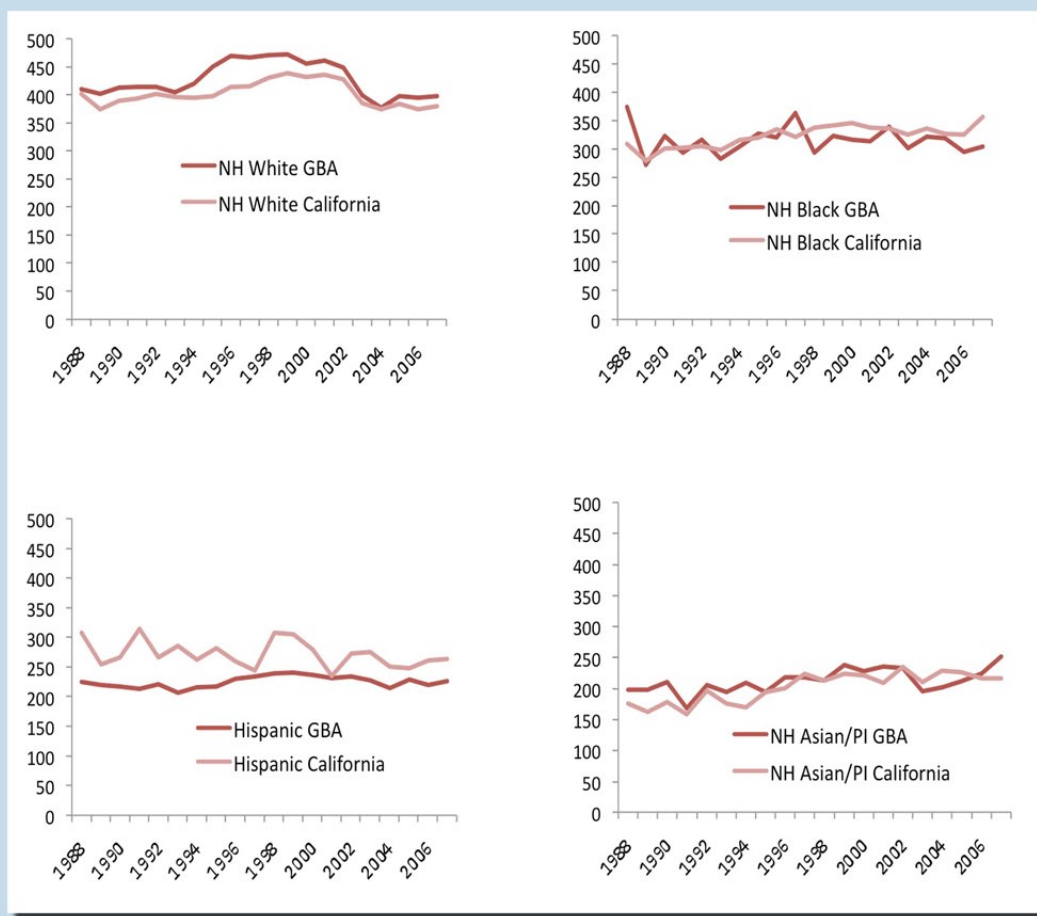
CANCER IN THE GREATER SF BAY AREA

BREAST CANCER

What do current breast cancer incidence rates look like?

Trends vary for different racial/ethnic groups. Rates for invasive breast cancer among non-Hispanic white women in the Greater Bay Area declined sharply from 2001-2004, likely due to widespread cessation of hormone therapy, but have since remained stable. Hispanic and black women ages 50 and above had stable rates from 1988 to 2007. Rates for Asian/Pacific Islander women in this age group increased by 1.4% during that time, which may be due to the adoption of a more westernized lifestyle.

Invasive Breast Cancer Trends by Race/Ethnicity, Women Ages 50 and Above (GBA=Greater Bay Area; NH=non-Hispanic; PI=Pacific Islander)



How do Greater Bay Area rates compare with the rest of California?

Among women ages 50 and above, breast cancer rates have been higher for non-Hispanic white women and Asian/Pacific Islander women in comparison to their counterparts in the rest of California. However, rates have been lower for black and Hispanic women in comparison to the rest of California. This may be due to regional differences in risk factors among the groups.

PREVENTING CANCER.
PROMOTING LIFE.