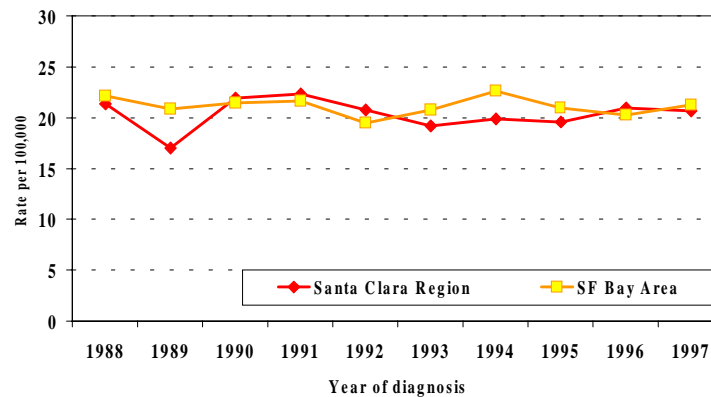




Corpus Uteri Cancer in the Greater Bay Area, 1988-1997

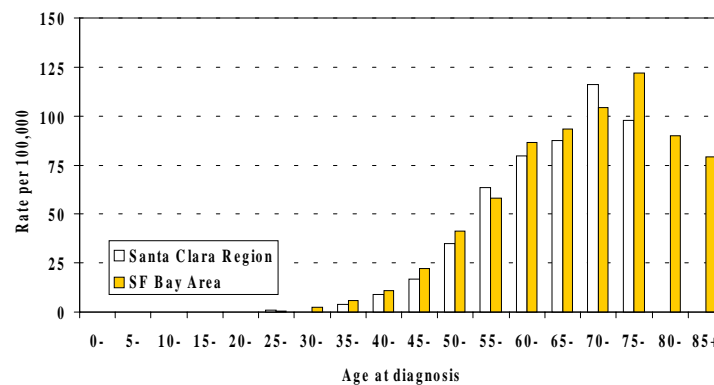
Corpus uteri cancer is the most common reproductive cancer in females. It is among the top five most frequently diagnosed cancers in women in the Greater Bay Area and in California as a whole. During the period 1988-1997, about 7,100 women were diagnosed with corpus uteri cancer in the Greater Bay Area.

Figure 1. Age-adjusted incidence rates of corpus uteri cancer, by year of diagnosis and region, 1988-1997



Incidence rates of corpus uteri cancer did not change from 1988 to 1997 (Figure 1, above). Rates in the Santa Clara Region (Monterey, San Benito, Santa Clara and Santa Cruz counties) and the San Francisco Bay Area (Alameda, Contra Costa, Marin, San Francisco and San Mateo counties) were similar.

Figure 2. Average annual age-specific incidence rates of corpus uteri cancer, by age and region, 1993-1997*



* Data not shown for rates based on fewer than 5 cases or for age-specific population totals less than 100,000

Corpus uteri cancer incidence rates rose with age. Rates were highest in women in their 70's (Figure 2, above).

Figure 3. Average annual age-adjusted incidence rates of corpus uteri cancer, by race/ethnicity and region, 1993-1997

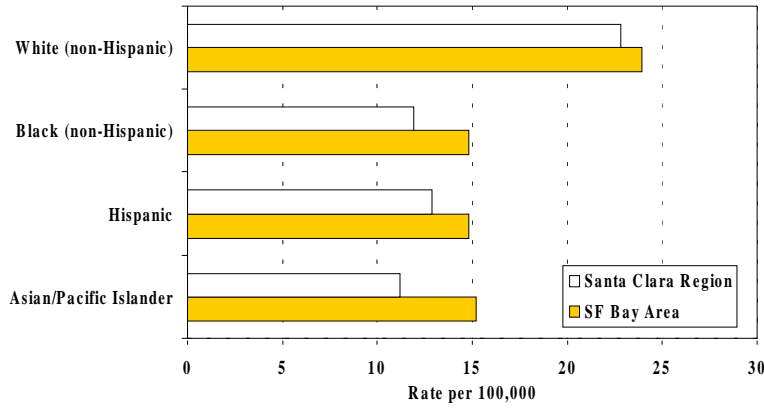
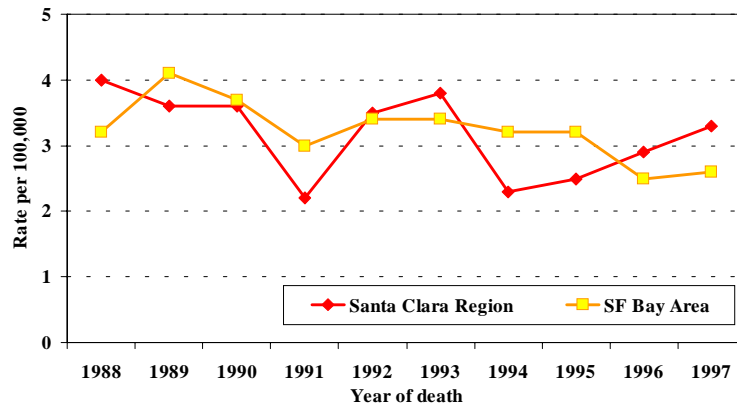


Figure 3 (above) shows the incidence rates of corpus uteri cancer by racial/ethnic group. The average annual age-adjusted incidence rate of corpus uteri cancer in white women in the San Francisco Bay Area was 24 cases per 100,000. The rate for white women in the Santa Clara Region was similar. Corpus uteri cancer occurred more often in white females than in black, Hispanic, or Asian/Pacific Islander females, for whom rates were comparable.

Figure 4. Age-adjusted mortality rates from corpus uteri cancer, by year of death and region, 1988-1997



There was a slight decrease in corpus uteri mortality in the San Francisco Bay Area from 1988 to 1997 (Figure 4, above). There was no clear pattern in corpus uteri cancer mortality over time for the Santa Clara Region, in part due to a smaller population size.

Technical Notes -- Because age distributions vary by population, a standard statistical procedure called “age-adjustment” was used so that we can examine differences in cancer incidence and mortality rates due to factors other than age. Rates are age-adjusted unless noted to be age-specific.

About the data -- Cancer data have been collected in Alameda, Contra Costa, Marin, San Francisco, and San Mateo counties since 1973, and in Monterey, San Benito, Santa Clara, and Santa Cruz counties since 1988, forming two parts (Regions 1 and 8) of the California Cancer Registry. These counties, referred to as the Greater Bay Area are also part of the National Cancer Institute’s Surveillance, Epidemiology, and End Results (SEER) registry program.

The **Northern California Cancer Center**’s mission is to reduce the burden of cancer through surveillance, epidemiology, prevention research and education. Essential to this mission is collaboration with partners in cancer research, education, and the community.